

MONTHLY MEMBERSHIP PROGRESS REPORT

LOCATION PENNSYLVANIA

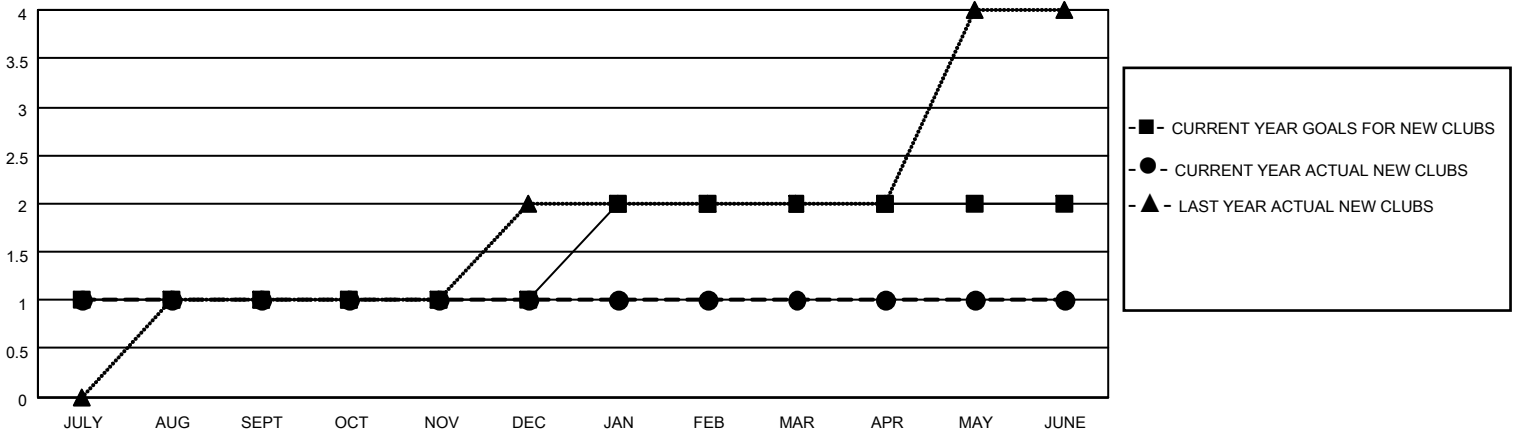
District 14 G

Results as of: 6/30/2022

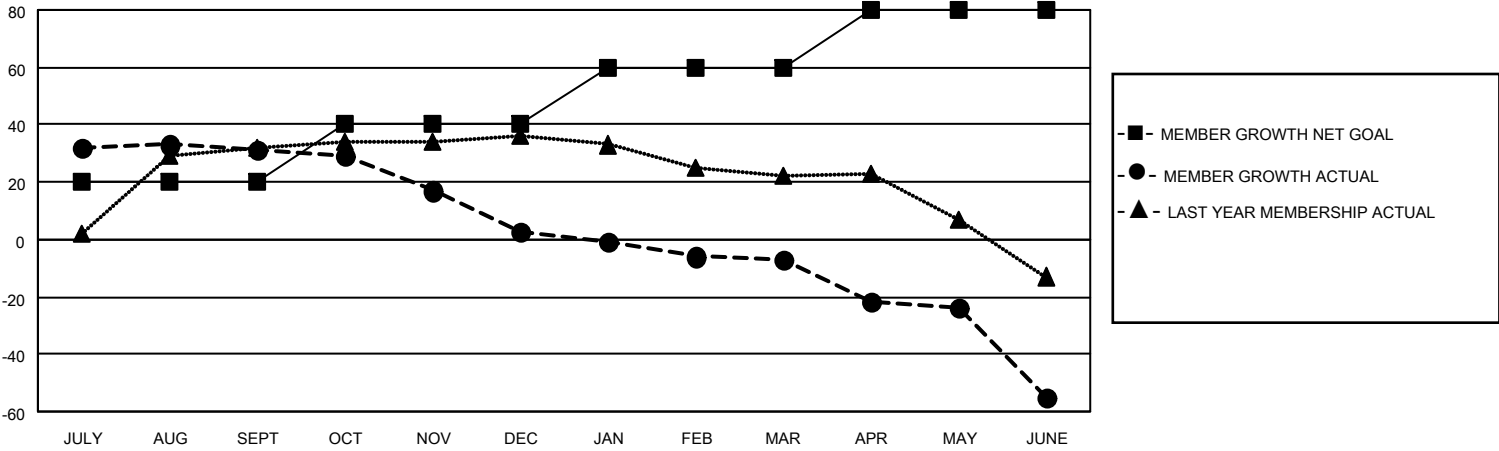
Clubs			
RESULTS FOR 2021-2022			
QUARTER	NEW CLUB GOAL	NEW CLUBS	DROPPED CLUBS
JULY/AUG/SEPT	1	1	0
OCT/NOV/DEC	0	0	1
JAN/FEB/MAR	1	0	0
APR/MAY/JUNE	0	0	0

Members			
RESULTS FOR 2021-2022			
QUARTER	MEMBER GROWTH NET GOAL	MEMBER GROWTH ACTUAL	DROPPED MEMBERS ACTUAL (including transfers)
JULY/AUG/SEPT	20	67	31
OCT/NOV/DEC	20	45	72
JAN/FEB/MAR	20	28	37
APR/MAY/JUNE	20	26	73

GOALS AND ACTUAL NEW CLUBS CUMULATIVE



GOALS AND ACTUAL MEMBERS CUMULATIVE



DROPPED CLUBS: 1

42 CLUBS OF 60 ADDED 1 OR MORE NEW MEMBERS

GENDER DISTRIBUTION

MALE	1,039 (66.35%)
FEMALE	527 (33.65%)
NON BINARY	0 (0.00%)
PREFER NOT TO ANSWER	0 (0.00%)

DROPPED MEMBERS

[CLICK HERE FOR CUMULATIVE MEMBERSHIP DATA](#)

DECEASED	41
CLUB CANCELLED	21
OTHER	151
TOTAL	213

TOTAL FAMILY UNIT MEMBERS	294
FAMILY MEMBERS PAYING HALF DUES	151